

Industry Wide Exercise (IWE) 2008

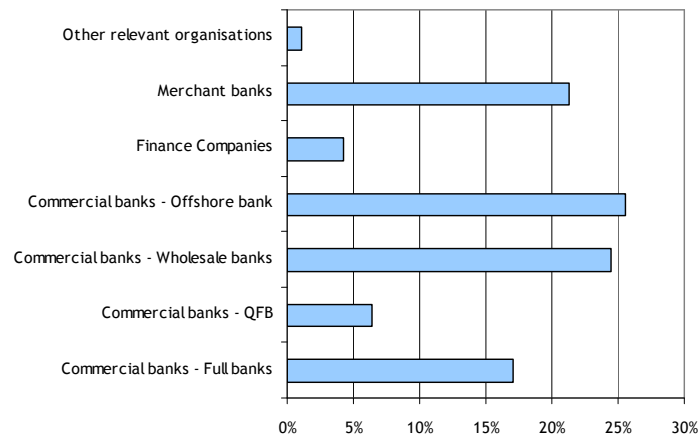
Agenda

- Background to ABS Pandemic Task Force
- Objectives of IWE 2008
- Exercise Governance
- Overview of the Exercise Timeline
- What to Expect

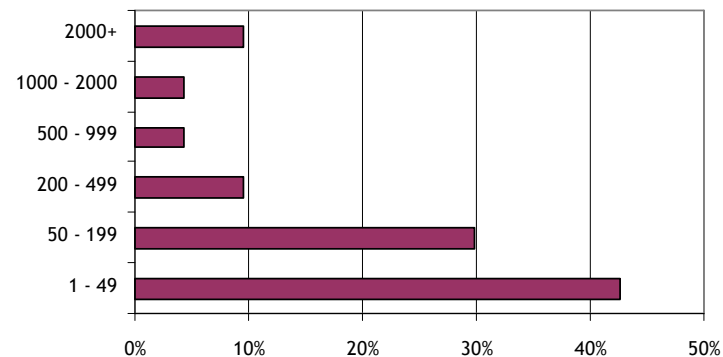
Avian Influenza (AI) Pandemic Working Group

- Under the ABS BCM Standing committee, an AI pandemic working group was formed in October 2005
- An AI pandemic workshop and seminar was conducted in December 2005 to raise awareness
- AI pandemic emerging best practices was issued to the industry in March 2006
- A survey was issued in July 2006 with the following objective:
 - Assess readiness across the financial sector in Singapore.
 - Identify areas where ABS could assist in improving Avian Influenza preparedness.
 - Collect data for financial utility providers to understand like demand on services.

Please state the type of institution



Organisation Size



Objectives and Scope of the IWE 2008

Objectives of the exercise

- Enhance the understanding of systemic risks to the financial services sector during a possible pandemic flu outbreak in the Asia Pacific region impacting Singapore.
- Enhance the preparedness of the financial service sector by providing the opportunity for organisations of all sizes within the sector to test their plans.
- Enhance the overall influenza pandemic readiness by integrating financial sector plans and crisis responses with those of Singapore Government.

Ownership

- This exercise is owned by the Industry/ABS with the full support of MAS and MHA.
- The exercise would be co-organised by ABS, MAS and MHA.

Scope/target audience

- Primary target audience – Financial institutions and financial utility providers that are regulated by MAS including banks, merchant banks, finance companies, securities firms, insurance companies, Singapore Exchange and Automated Clearing House, as well as the relevant government bodies.
- Secondary target audience – Other financial utility providers (eg. Telco operators, BC/DR service providers, etc) that are able to and/or wants to contribute or participate in the scenario/exercise.

Exercise duration and date

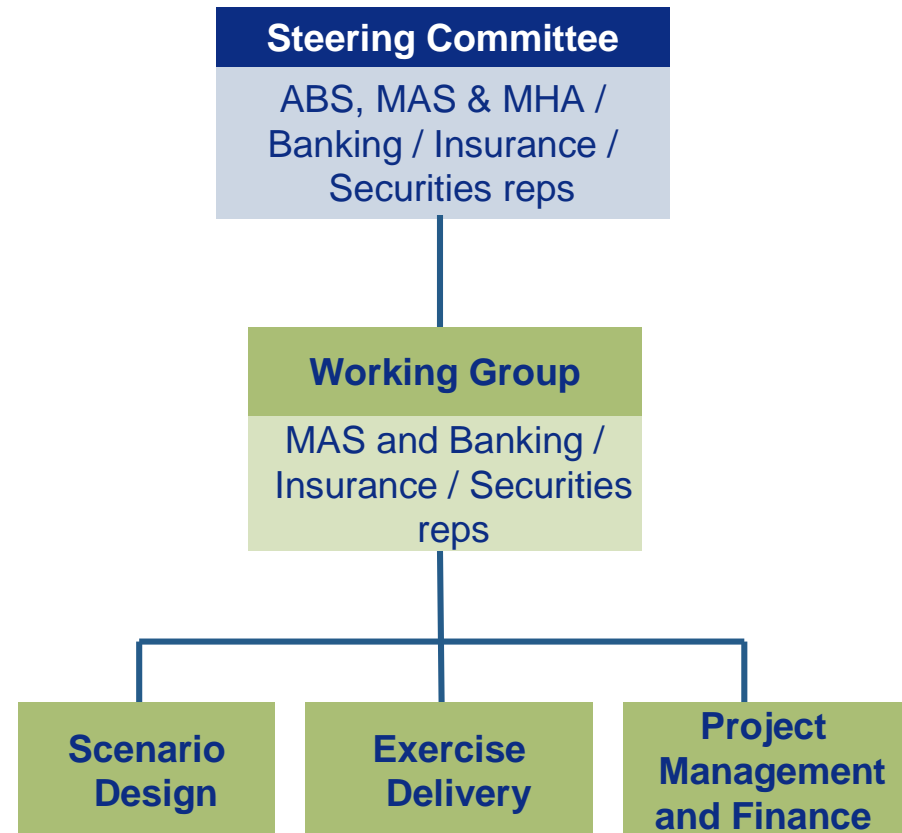
- 2 week exercise, consisting of 3 walkthrough scenarios and one practical.
- Held during the first 2 weeks of September 2008.

Governance & Structure

The following structure to provide governance over the project

- **Steering Committee** – Responsible for overall control of exercise & sponsorship on behalf of ABS & MAS.
- **Working group** – Responsible for overall management of the exercise design, execution and reporting.
- **Scenario Design Team** – Responsible for setting the scenario design with representation from industry and government bodies.
- **Exercise Delivery** – Responsible for successful delivery of the exercise.
- **Project Office** – Responsible for management of the overall project and finance. (KPMG)

Structure for IWE 2008

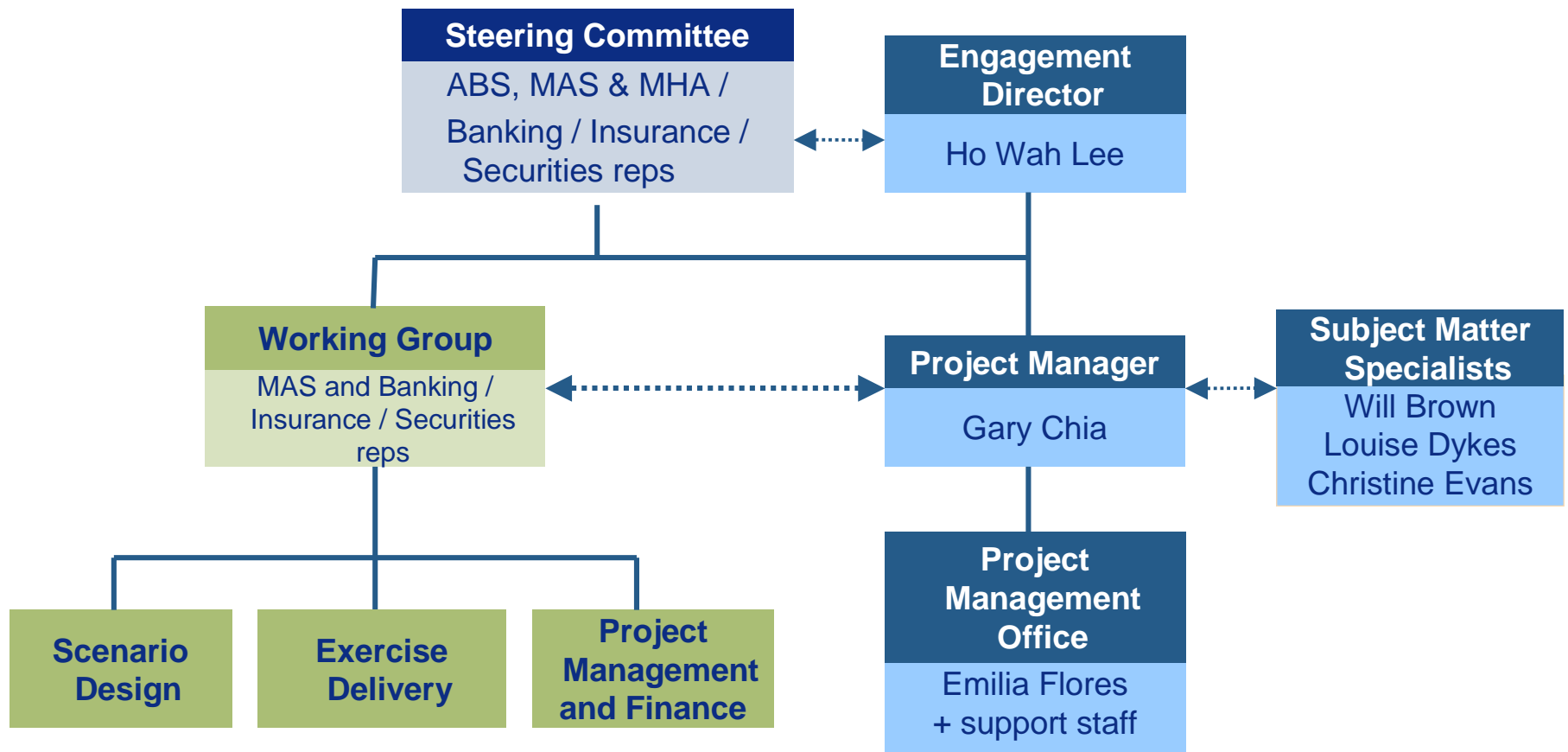


Benefits of an Industry-Wide Exercise

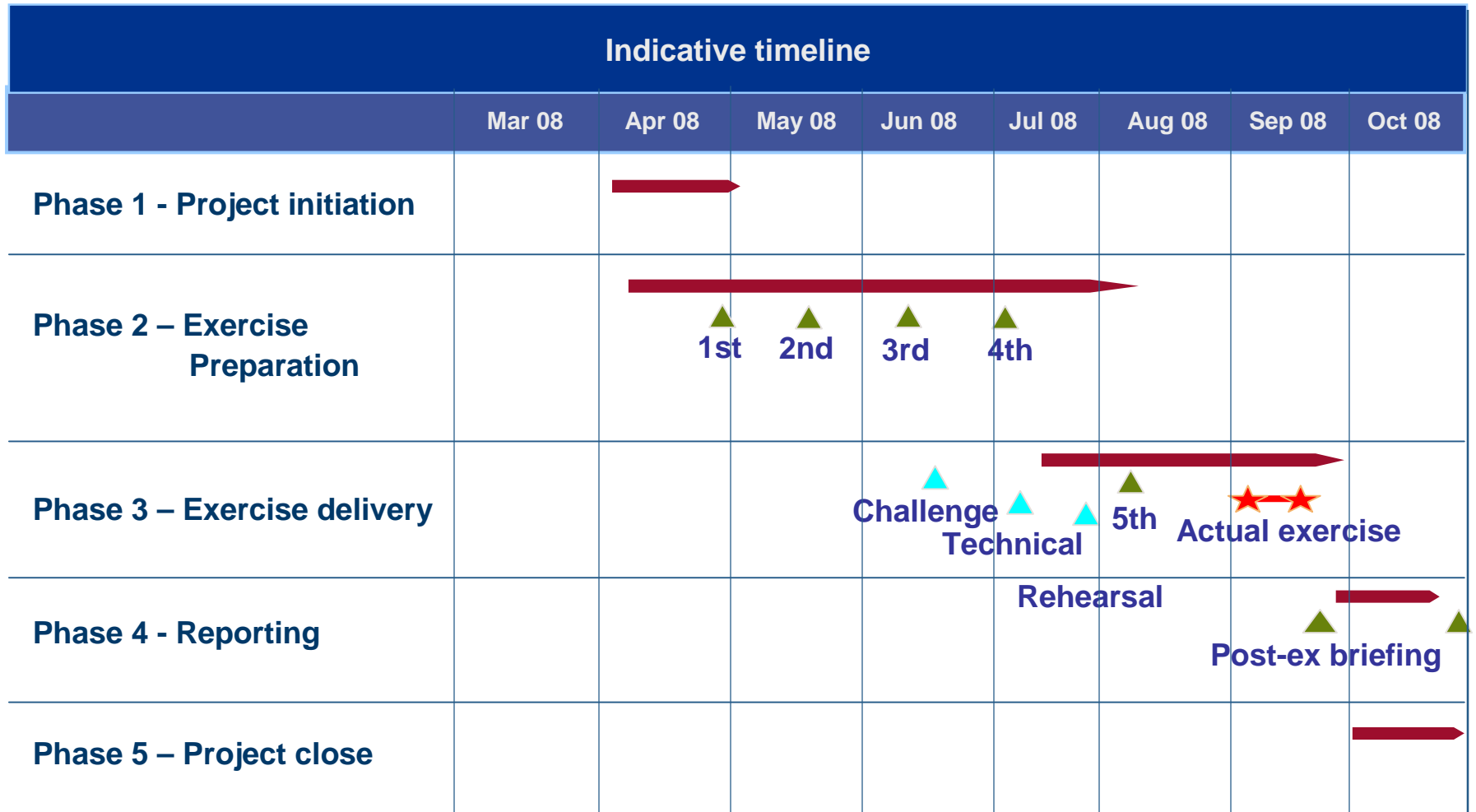
To Financial Institutions and Singapore:

- Improves coordination across the sector
- Integrating financial sector plans and crisis responses with those of Singapore Government
- Reinforces the resilience of the financial sector
- Enhance the understanding of impact of Influenza Pandemic to financial sector
- Provides a platform for Institutions to test their plans
- Improves market confidence in Singapore's capability to respond

KPMG Project team structure

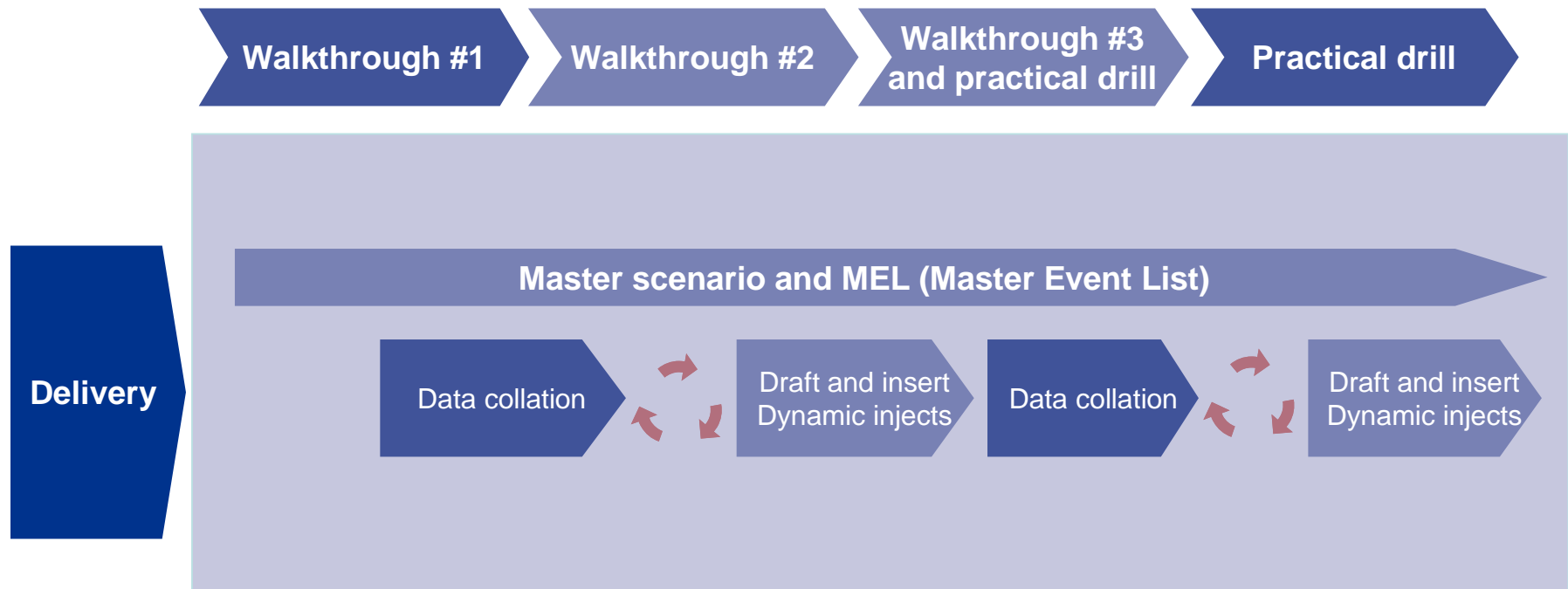


Indicative project timeline



▲ = Briefing/Communiqué

Proposed exercise format



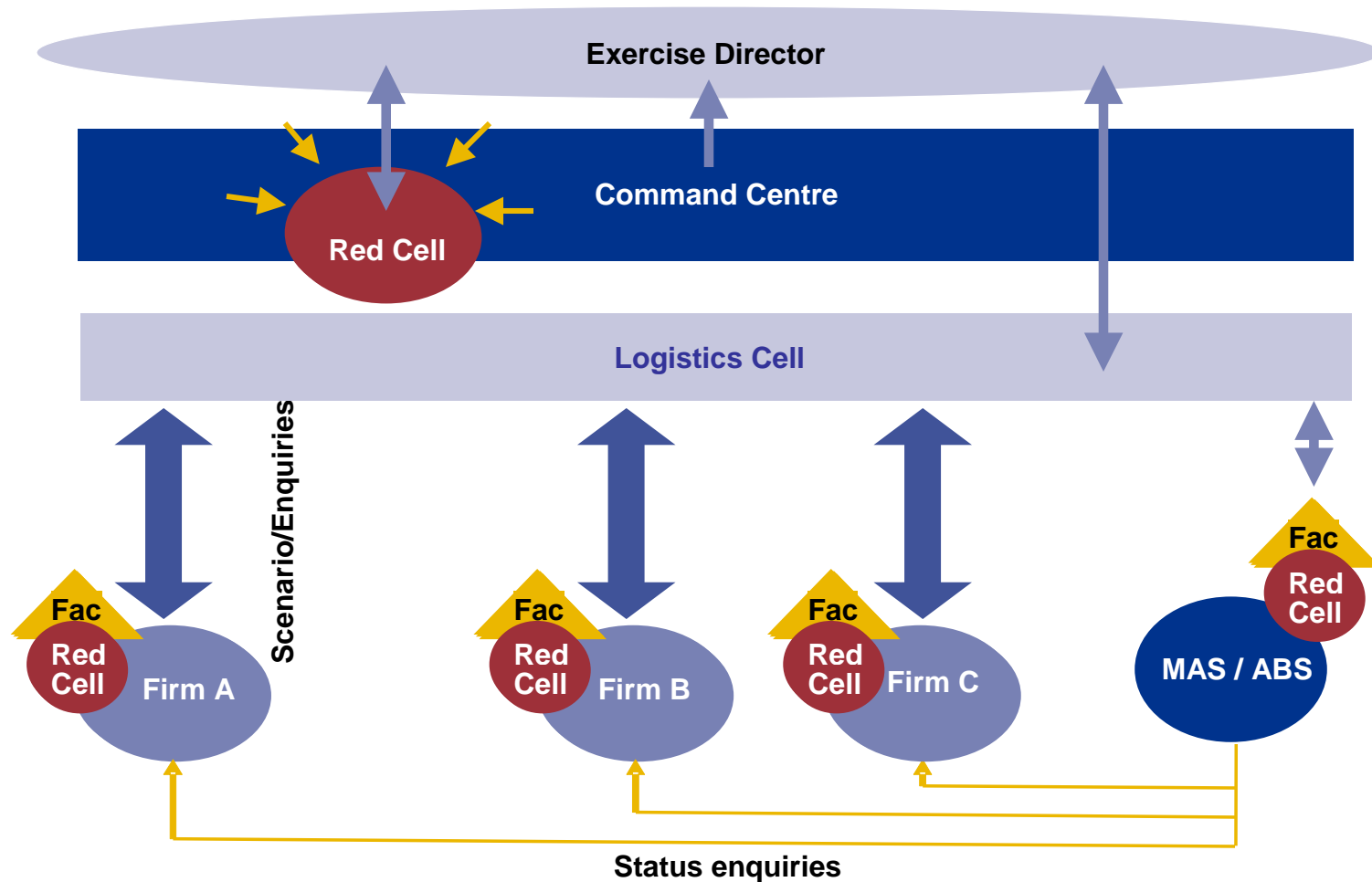
What participants should expect

- 3 walkthroughs addressing different stages of the pandemic
- Scenario designed and written by industry experts from the health, financial and civil contingencies sector
- The opportunity to carry out a practical exercise in the context of the industry-wide exercise
- To identify a representative who will work with the project team and take on the role of participant red cell

What participants should expect

- Participant specific injects written in conjunction with the participant firms themselves
- A blend of pre-defined and dynamic injects to ensure realism, credibility and involvement throughout the simulation
- A scenario designed to alter and “flex” in line with participant reactions throughout the walkthroughs

Communication and Reporting



Information Portal

ABOUT COMMUNIQUES INDUSTRY BRIEFINGS PROJECT OFFICE CONTACT

IWE '08
INFORMATION PORTAL

MEMBER'S LOGIN

Log In [Forgot Your Password?](#)

Search Type: [XML](#) [RSS feeds](#)

INDUSTRY WIDE EXERCISE 2008

Communiqués

- IWE Communique 1

This communique contains mainly project update as well as the next steps as part of the preparation of the exercise. Aim is to assist in all possible ways and raise the levels of awareness about all aspects of the Exercise.

+ IWE Communique 2
+ IWE Communique 3
+ IWE Communique 4
+ IWE Communique 5
+ IWE Communique 6
+ IWE Communique 7

Calendar's of Events

Upcoming Events

- xx June - Official Launch of IWE '08 Website
- xx June - Industry Briefing 1
- xx June - Participant's Preliminary

Post Events

- xx June - Communique 1

Industry Briefings

IWE-Industry Briefing 1

Purpose of this briefing is to provide a project update, an overview of the steps going forward, as well as a few reminders.

+ IWE-Industry Briefing 2
+ IWE-Industry Briefing 3
+ IWE-Industry Briefing 4

© 2008 KPMG, a Singapore registered partnership and a member firm of the KPMG network of independent member firms affiliated with KPMG International, a Swiss cooperative